

## Kathryn Peperkorn

Peperkorn, a vocal instructor, has performed numerous operatic roles such as: Mimi in *La Boheme*, Norma in *Norma*, Anna Bolena in *Anna Bolena*, Violetta in *La Traviata*, Costanza in *Entführung aus dem Serail*, Marguerite in *Faust*, Leila in *Les pêcheurs des perles*, Sarah Garrett in *She never lost a passanger*, and Maketaten in Philip Glass' *Akhnaten*. She is also a member of the Florentine Opera Chorus of Milwaukee



Kathryn has a B.S. degree in K-12 music education from Concordia University Nebraska, and an M.A. in vocal performance from Ball State University. She has taught choral and instrumental music from kindergarten through college, and has a wide experience studying and teaching young voices.

## Fumi Nishikiori-Nakayama

Nishikiori-Nakayama earned bachelor and master degrees in piano and harpsichord from the Chicago Musical College of Roosevelt University and from Indiana University.

She has conducted Indiana University Symphony Orchestra, ad-hoc orchestra, chil-



dren's chorus and adult vocal ensembles.

She is a teacher at the Wisconsin Conservatory of Music in Milwaukee.

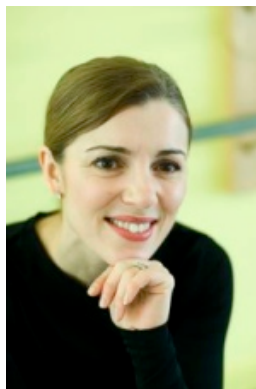
## Annie Hackett

Ms. Hackett began dancing at the age of 4, performing professionally at the age of 15, and teaching at the age of 18. She is the proud co-owner and artistic director of the Kenosha Academy of Dance. She is an adjunct professor of dance at Carthage College (Kenosha, WI), is on the faculty of the Lincolnshire Academy of Dance (Lincolnshire, IL), and has been a guest teacher at Columbia College and Roosevelt University (both Chicago, IL). Ms. Hackett also teaches workshops and master classes all over Chicago and the surrounding suburbs.

Ms. Hackett's performing career earned her membership into the Actor's Equity Association. She has performed in many productions at theaters such as The Chicago Shakespeare Theater, Theatre Ensemble, Northlight Performing Arts Center and The Paramount Arts Center.

## Briana Lipor

Briana has been involved in over sixty theatrical productions. She has been director, choreographer, actor, stage hand,



costume designer, and recently fulfilled her positions of composer and playwright. Briana has extended her efforts with the arts through her student fundraiser "Help a School: Art Smarts" and various other fundraising events. She was recently awarded the title of Miss Wisconsin 2008 where she will promote her platform, "Save the Arts: Stressing the Importance of Arts Education" for a year.

## How to Find Us

### On the Web

SEWPA: <http://sewpa.org/>

*Opera ala Carte*: <http://operaalacarte.net/>

*Opera ala Carte on Facebook*: <http://tinyurl.com/bpkw48> (or just search for "Opera ala Carte")

*Opera ala Carte on Flickr*: <http://www.flickr.com/groups/636693@N24/>

### Email

[Kathryn@operaalacarte.net](mailto:Kathryn@operaalacarte.net)

### Telephone

(262)551-9081

### Address

2044 24th Avenue  
Kenosha, Wisconsin 53140

**SEWPA**  
(SouthEast Wisconsin Performing Arts)  
presents the 2009

# Fine Arts Camp



Music  
Drama  
Movement

July 20 to August 1  
2009

## Why Should My Child Attend?

If you have a child that has a special love for the arts, this camp is a great opportunity for them to combine the performing arts of singing, acting and creative movement. They will be able to combine their talents with those of exceptional high school students in the performance of the operas, "Green Eggs and Ham" and "The Fairy Queen".

## Fine Arts Camp

Choir camp will be held from 1-4:30 weekdays July 20-July 31st at Messiah Lutheran Church, 2026 22nd Ave.

They will be performing in "Green Eggs and Ham" On July 23rd, 24th and 25th

They will also be performing in "The Fairy Queen" at 7 p.m. on July 31st and Aug. 1st at Reuther auditorium. In all of these performances they will have the opportunity to be performing along with the high school students participating in Opera ala Carte.

Instructors include Kathryn Peperkorn, drama coach Brianna Lipor, dance instructor Annie Hackett, and Dalcroze Eurhythmics instructor Fumi Nishikiori-Nakayama.

## What will the days be like?

Musically, the children will be learning to sing together in a clear head voice sound, both in unison and in parts. Acting and theatre skills will be included in the fine arts camp as the children learn through play and improvisation. In dance they will work on basic movement and technique. They will be working with craft instructors to help construct their costume.

All of these skills will be used in their own stage performances.

## Costs and dress:

The cost for the choir camp is \$160, plus a \$25 deposit. Students will need blue jeans for the performance of "Green Eggs and Ham".

## Opera ala Carte:

Opera ala carte is the 7-12 grade branch of these productions. These students practice from June 11 until the performances in order to produce scenes from several operas on stage. They will offer four operas in 2009:

## About SEWPA

Southeast Wisconsin Performing Arts (SEWPA) is a 501(c)3 non-profit organization incorporated in Wisconsin. We look forward to continuing to work with the many people who have made SEWPA and Opera ala Carte a success so far!

Because of the continued growth of Opera ala Carte, in 2008, SEWPA (South East Wisconsin Performing Arts, Inc.) incorporated into a nonprofit organization to foster the Fine Arts through education, audience outreach and performance. Offering opera, dance, choral and instrumental music, SEWPA gives young people (ages 5-22) the opportunity to take classes that will

*All participants and parents must attend the mandatory meeting on April 25th at 6:00 p.m. This meeting will include vocal screening, fitting for costumes, and other information about the program.*

inspire and engage them, directed by some of the most talented professionals in the area. SEWPA provides a safe and encouraging environment that gives each young performer, not only the skills necessary to becoming an artist, but also to become confident young adults.

The future of SEWPA holds many possibilities. As we continue to improve our programs of Opera ala Carte, the Fine Arts Camp, and our Dickens Caroling group, we hope to add new programs. In 2009 we are premiering our SEWPA Ballet, which will perform in conjunction with the opera, as well as other times. We hope to be starting a Children's Choir and a High School Honor choir within the next few years. The possibility is also there with partnering with some existing instrumental groups, and choral groups, and who knows? Truly for SEWPA the sky is the limit. We are in a great location with a the great gift of the arts ready to be shared.

For more information,  
please contact Kathryn  
Peperkorn,  
262-551-9081 or  
kathryn@operaalacarte.net,  
or visit us on the web.

## Opera ala Carte Fine Arts Camp 2009

### PARTICIPANT FORM

YES! I would like to have the following of my children sign up the Fine Arts Camp (copy form as necessary):

NAME: \_\_\_\_\_ AGE \_\_\_\_\_

STAGE/DANCE EXPERIENCE  
\_\_\_\_\_

INSTRUMENTS PLAYED  
\_\_\_\_\_

Parent/Guardian Name & Address  
\_\_\_\_\_  
\_\_\_\_\_  
\_\_\_\_\_

PHONE: \_\_\_\_\_  
\_\_\_\_\_

EMAIL: \_\_\_\_\_

You may contact us by telephone or email or mail this form to:  
Opera ala Carte  
2044 24th Ave.  
Kenosha, WI 53140